



Fort End, Haddenham, Buckinghamshire - HP17 8EJ

£0

 **TIM RUSS**
& Company



Fort End

Haddenham, Buckinghamshire HP17 8EJ

- DELIGHTFUL & BEAUTIFULLY PRESENTED PERIOD COTTAGE
- THREE GOOD SIZE BEDROOMS
- RE-FITTED KITCHEN/DINER & SEPARATE UTILITY ROOM
- SITTING ROOM & SEPARATE GARDEN ROOM
- STUDY/OFFICE
- PRIVATE COURTYARD GARDEN
- HEART OF HADDENHAM VILLAGE
- EASY ACCESS TO MARYLEBONE & OXFORD CITY via ROAD & CHILTERN LINE STATION.



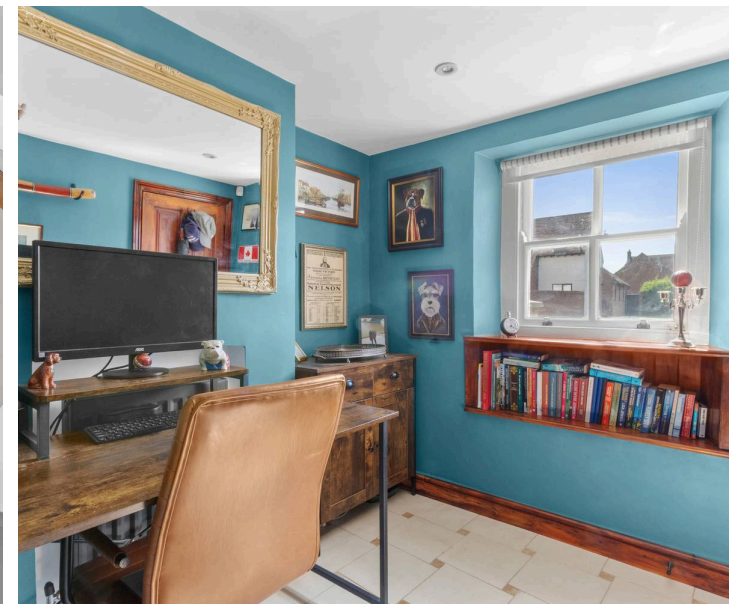
Fort End

Haddenham, Buckinghamshire

Step inside this delightful and beautifully presented period cottage, perfectly placed in the heart of Haddenham village. As you enter, you are greeted by a welcoming entrance space combining charming original features with tasteful recent upgrades. The sitting room is ideal for relaxing evenings or entertaining guests. The re-fitted kitchen and dining area is thoughtfully designed, blending modern convenience with timeless style, while the separate utility room adds valuable practicality to every-day living. A versatile garden room offers a peaceful retreat, filled with natural light, making it an inviting spot for reading or unwinding. The property boasts three good size bedrooms, each offering a tranquil space to retreat at the end of the day, and a dedicated study or office provides flexibility for remote working or creative pursuits. With its seamless blend of period character and contemporary updates, this cottage offers comfort, practicality and elegance. Residents will appreciate the easy access to Marylebone and Oxford City, whether by road or the nearby Chiltern Line station, making it an ideal base for commuters or those who love to explore. This is a rare opportunity to secure a home that combines village charm with superb connectivity and thoughtful, spacious interiors. Council Tax band: D

Tenure: Freehold

EPC Energy Efficiency Rating: D





18 Fort End, HP17 8EJ

Approximate Gross Internal Area
 Ground Floor = 62.1 sq m / 668 sq ft
 First Floor 1 & 2 = 52.9 sq m / 569 sq ft
 Total = 115.0 sq m / 1237 sq ft

Floor Plan produced for Tim Russ & Company by Media Arcade Ltd ©.

Illustration for identification purposes only. Window and door openings are approximate. Whilst every attempt is made to assure accuracy in the preparation of this plan, please check all dimensions, shapes and compass bearings before making any decisions reliant upon them.



Tim Russ and Company

Tim Russ & Co, 112 High Street - OX9 3DZ

01844 217722 • thame@timruss.co.uk • timruss.co.uk/

By law we must verify every seller and buyer for anti-money laundering purposes.

Checks are carried out by our partners at Lifetime Legal for a non-refundable £65 (incl. VAT) fee, paid directly to them.

For more information please visit our website.



Particulars described on our website and in marketing materials are for indicative purposes only; their complete accuracy cannot be guaranteed. Details such as boundary lines, rights of way, or property condition should not be treated as fact. Interested parties are advised to consult their own surveyor, solicitor, or other professional before committing to any expenditure or legal obligations.