



10 Gatehouse Mews, Horsham

Guide Price £430,000

10 Gatehouse Mews

Horsham, Horsham

An immaculately presented two bedroom, two bathroom home built by Berkeley Homes in 2018 and situated in the popular Highwoods Development. This bright and spacious home, features versatile layout arranged over two floors and this property is ideal for young couples and investors. To the ground floor, the reception hallway welcomes you as it leads into the separate kitchen. The modern kitchen features a range of wall and base units with contrasting light and dark colours. Integrated appliances include Zanussi oven, microwave, induction hob, extractor fan, fridge, freezer and dishwasher. To the rear the spacious open plan living / dining room features french doors with plenty of natural light and useful storage cupboard. From the hallway there is the convenience of a utility cupboard which has plumbing and space for a washing machine/tumble dryer and modern ground floor cloakroom.

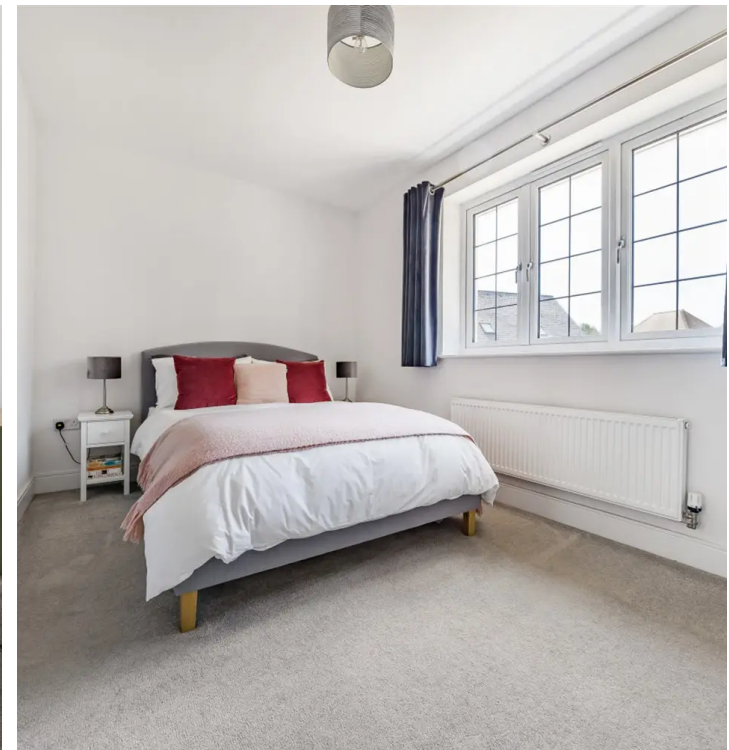
To the first floor, the main bedroom benefits from fitted wardrobes and a stylish en suite shower room with large built in mirrored cabinet. The second double bedroom is also complete with a en suite bathroom featuring bath with overhead shower, partial tiling and chrome heated towel rail.

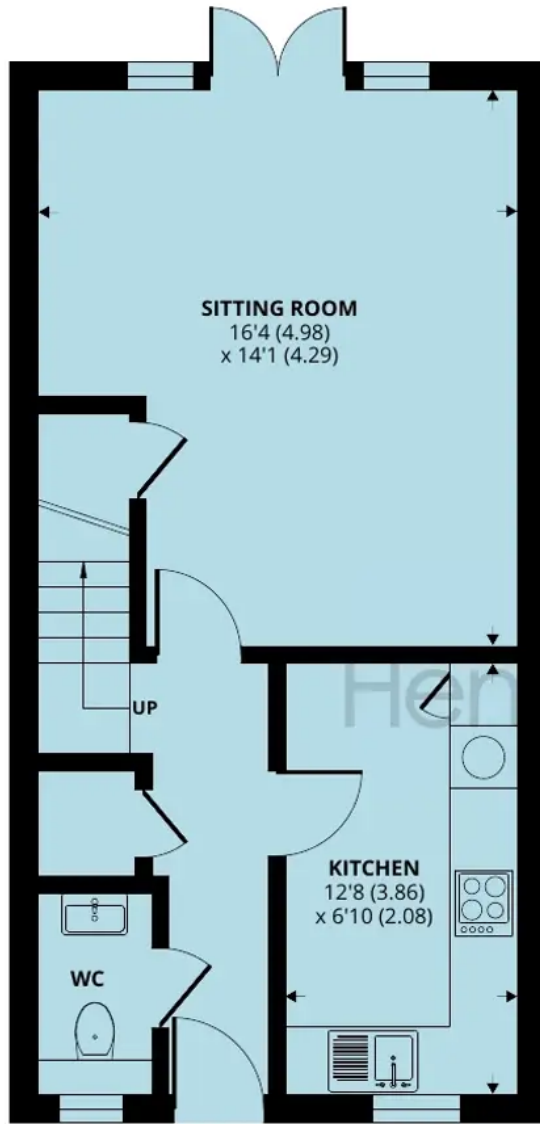
Tenure: Freehold

EPC Energy Efficiency Rating: B

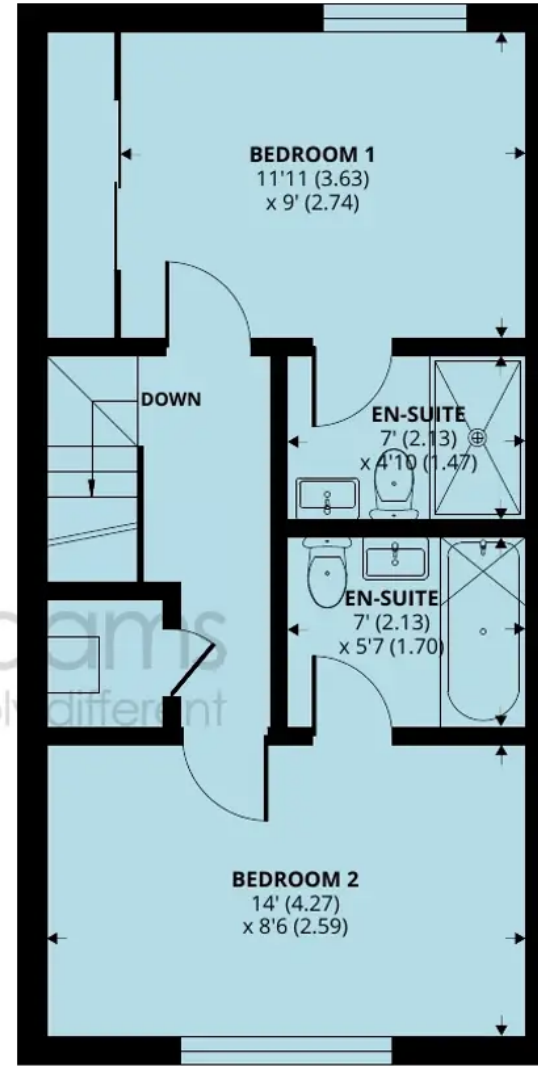
EPC Environmental Impact Rating: B

- Separate kitchen
- Open plan living / dining room
- Fitted wardrobes to bedroom one
- Two bedroom mid-terraced home
- Privately gated access
- Allocated parking





GROUND FLOOR



FIRST FLOOR

10 Gatehouse Mews, Horsham, RH12 1JB

Approximate Area = 830 sq ft / 77.1 sq m

For identification only - Not to scale



Floor plan produced in accordance with RICS Property Measurement Standards incorporating International Property Measurement Standards (IPMS2 Residential). © nichecom 2023. Produced for Henry Adams. REF: 995590



Henry Adams - Horsham

Henry Adams HRR Ltd, 50 Carfax, Horsham - RH12 1BP

01403 253271

horsham@henryadams.co.uk

www.henryadams.co.uk/

Agents Note - Our particulars are for guidance only and are intended to give a fair overall summary of the property. They do not form part of any contract or offer, and should not be relied upon as a statement or representation of fact. Measurements, areas and distances are approximate only. Photographs may include lifestyle shots and pictures of local views. No undertaking is given as to the structural condition of the property, or any necessary consents or the operating ability or efficiency of any service, system or appliance. Please ask if you would like further information, especially before you travel to the property.