

Wood Lane, Heskin

PR7 5NT



£265,000



Fabulous extended semi detached property, with a spacious family room, in a popular and sought after residential area with easy access to primary transport routes and local schools, and with beautiful views to the rear. To the front the block paviour driveway can accommodate several vehicles and leads past the garden to the main entrance. Step into the vestibule with tiled flooring and from there to the bay fronted living room with log burning stove. Step through into the delightful heart of the house with plenty of space for both dining and comfortable furniture and the kitchen with central island, wall and base units with integrated appliances including double oven, separate single oven, induction hob, dishwasher, refrigerator, freezer and space, power and plumbing for other appliances including the Main combi boiler. Externally the private, west facing garden is a real sun trap and, with block paviour terrace, raised decking and shed with power, is the perfect place to relax and entertain. Back inside to the first floor landing is ladder access to the part boarded loft with light. Bedroom one is a great sized double to the front with bedroom two, also a double, to the rear with views out to fields and trees. Bedroom three is a very comfortable single, and, completing the first floor, the bathroom comprises bath with screen and rainfall shower over, wc, wash hand basin and ladder heated towel rail. With over 880 square feet of accommodation this is lovely place to call home.



Fabulous extended semi detached property, with a spacious family room, in a popular and sought after residential area with easy access to primary transport routes and local schools, and with beautiful views to the rear and 880 square feet of accommodation.

Council Tax band: B

Tenure: Freehold

- Extended semi detached property
- Three good sized bedrooms
- Beautiful family room
- West facing garden
- Open views to the rear
- 880 square feet of accommodation



Eccleston Branch

265 The Green, Eccleston, PR7 5TF
01257 451673

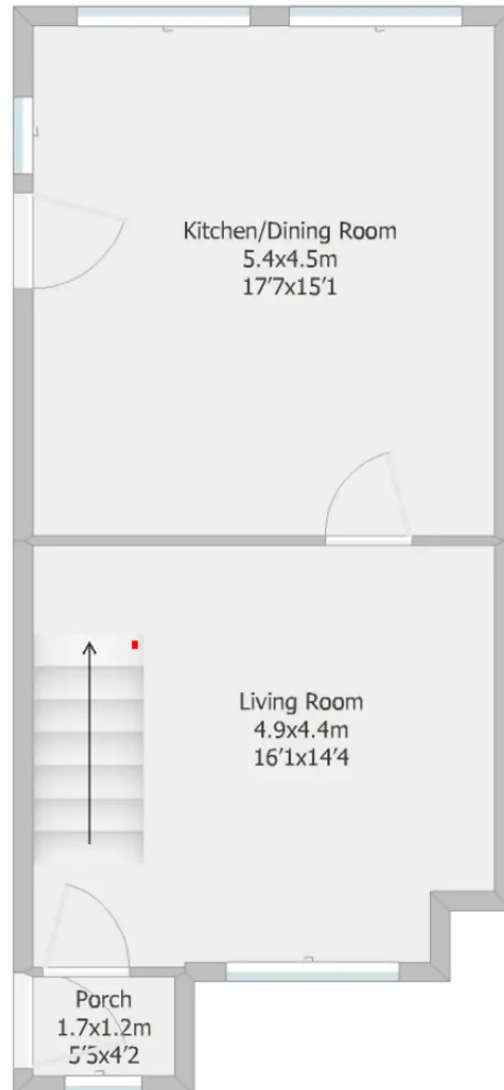
Coppull Branch

244 Spendmore Lane, Coppull, PR7 5DE
01257 794588

www.hometruthslancs.co.uk
office@hometruthslancs.co.uk



Ground Floor
49 sq m (approx)
527.4 sq f (approx)



First Floor
33.2 sq m (approx)
357.4 sq f (approx)



Drawing not to scale and is for illustrative purposes only.
Plan produced by RoomSketcher.